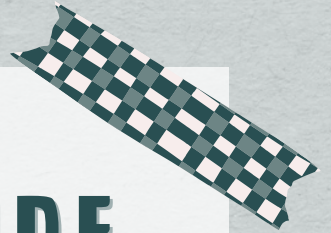




FAMILY TRAVEL GUIDE

**ZION
NATIONAL
PARK**

UTAH



WWW.CAGNONScone.COM

ZION NATIONAL PARK

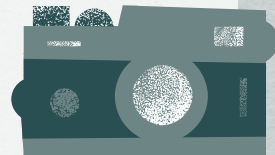
Zion National Park offers visitors an incredible breadth of beauty and adventure, from the slender slot canyons through which you squeeze, to the giant canyons of the Virgin River. The brown, red, and grey rock is colorful and mighty, and streams, waterfalls, and other waterways show how erosion has long played a role here. Find your humility in staring at the 2,000 foot cliffs of Zion Canyon, hike the incredible maze of trails and pathways that wind through the park, and enjoy the diversity of wildlife. This landscape is one best enjoyed over several days.



Read the full story

BLOG POST

MUST SEE SITES



ZION CANYON

At over 2,400 feet deep, this canyon is a must-see for any visitor. Zion Canyon Scenic Drive winds along the canyon floor along the North Fork of the Virgin River and some of the most breathtaking scenery in the park. Utilize the park shuttle bus to access this road (pick up the shuttle at the visitor center), as cars are not allowed. As buses fill up in the Spring and Summer and lines can be long, get there early to avoid the wait.

ZION NATURE CENTER

Shuttle Stop 2 - A wide variety of programs for children, located at the northern end of the South Campground, an easy walk along the Pa'rus Trail from the Zion Canyon Visitor Center.

COURT OF THE PATRIARCHS

The Three Patriarchs (Shuttle Stop 4), a trio of peaks to the west, named for Abraham, Isaac, and Jacob.

EXPERT TIP: Cross the road from the shuttle stop and head 0.5 miles up the San Bench Trail for an even better view of the Three Patriarchs than that you'll get from the official viewpoint.

DRIVE ZION-MOUNT CARMEL HIGHWAY

On the east side of the park, drive the 10-mile stretch of the Zion-Mount Carmel Highway (Hwy. 9) between the East Entrance Station and Zion Canyon. This highway offers incredible views of the valley with scenic views, two tunnels, and several overlooks, including views of the White Cliffs and Checkerboard Mesa (both worth the visit).

EXPERT TIP: Large vehicles, RVs and some truck campers will require traffic control to enter the tunnels, and must enter during ranger hours of 8am-8pm



HIKE RECOMMENDATIONS

P. 1/3

WATCHMAN TRAIL

Shuttle Stop: Zion Canyon Visitor Center

(3.1 MILES ROUNDTrip, MODERATE, 2.5H)

Pick up this trailhead north of Watchman Campground, and climb to a bench below Watchman Peak, the stunning mountain near the visitor center.



PA'RUS TRAIL

Shuttle Stop: Zion Canyon Visitor Center and Canyon Junction

(2.0 MILES ONE WAY, RELAXING, 1H)

This paved trail runs from the South Campground to the Canyon Junction Shuttle Stop and provides a nice stroll along the Virgin River.



EMERALD POOLS TRAILS

Shuttle Stop: Zion Lodge

(RELAXING/MODERATE, 1-3H)

Views of Zion Canyon and small waterfalls and pools characterize the views from this trail, which has three length options. Take the paved path to the Lower Pool (1.2miles roundtrip) to view the falls, or continue on to the Middle Pools (1.8miles roundtrip), a pair of pools at the base of small waterfalls. If you are daring, take the steep up-and-back trail from the Middle Pools to the Upper Emerald Pool (2.6miles roundtrip), a special spot with a beach and towering cliffs above.



HIKE RECOMMENDATIONS

P. 2/3

RIVERSIDE WALK

Shuttle Stop: Temple of Sinawava

(2 MILES ROUNDTrip, RELAXING, 1H)

This trail begins at the end of the Zion Canyon Scenic Drive and winds upstream along the river to the Virgin River Narrows (see below for info on hiking the NARROWS TRAIL). The first half of this trail is stroller/wheelchair accessible, and the kids will enjoy skipping rocks in the river along the way.

THE NARROWS

Shuttle Stop: Temple of Sinawava

(1.5 MILES EACH WAY RECOMMENDED, 3.5-4H TOTAL)

Hiking IN the Virgin River, where you'll find yourself wading through the water (knee deep to chest deep, depending on water levels), with no trail. A good half-day trip begins at the end of Riverside Walk (see above for info), and follows the Narrows upstream for 1.5 miles to Orderville Canyon.

EXPERT TIP: Rent special canyoneering shoes in Downtown Springdale, UT (right outside the park), as well as neoprene socks, dry bags, or dry suits to ensure a comfortable venture. *Note: The Narrows closes often because water levels do not permit or are not safe to permit hiking. You'll need to check beforehand if you will be able to attempt this adventure.



HIKE RECOMMENDATIONS

P. 3/3

OBSERVATION POINT TRAIL Shuttle Stop: Weeping Rock

(6.7 MILES ROUNDTrip, STRENUOUS, 4-6H)



This trail climbs 2,150 vertical feet to the tip of Zion Canyon. The trail is characterized by several switchbacks before you encounter the East Rim Trail, which you join halfway. Head left on the East Rim Trail up Echo Canyon to Observation Point, and take in the views of Zion Canyon.

WEST RIM TRAIL TO ANGELS LANDING Shuttle Stop: The Grotto

(5.4 MILES ROUNDTrip, STRENUOUS/NEXT-LEVEL, 4-5H)



This trail begins as you cross the North Fork of the Virgin River, and head along two miles of paved path on the West Rim Trail. From there, you take 21 short switchbacks, aptly named "Walter's Wiggles," up to Scout Lookout

Note: if you only opt to hike this far, difficulty rating is STRENUOUS, but not unachievable for seasoned hikers and children). From this point, this trail is not recommended for children or those with a fear of heights (NEXT LEVEL), as the trail meanders up Angel's Landing along a narrow rib with cliff drop-offs on both sides, and utilizing cables at points. For those who are brave enough, the views at the top are an incredible and once-in-a-lifetime reward.

CAN'T MISS ADVENTURES

BIKING

Biking trails throughout the park and into the adjacent town of Springdale, Utah, make biking a great way to get around. Rent bikes in Springdale from one of the many outfitters if you did not bring your own.

ICE CREAM

Get ice cream from the historic Zion Lodge and enjoy it outside on the grass in the middle of Zion Valley

HELPFUL HINTS



PARK LODGING



For those camping or travelling by RV, the Watchman Campground in the park provides an amazing home during your stay (right in the park next to the visitor center and shuttle stop)

OUTSIDE PARK LODGING



For RV lodging outside the park, consider a stay at the Zion Canyon Campground and RV Resort.

VISIT SPRINGDALE UTAH

The shuttle bus that travels through the park also connects to the adjacent town, Springdale, Utah.

The shuttle runs from 7am-8:30pm in summer months. Make sure you take the correct shuttle line, as one line runs only through the park, and the other from the park entrance into Springdale.

SUMMER WEATHER CAN BE EXTREMELY HOT.

Make sure to bring hats, hike with plenty of water, and wear sunscreen.

ZION-MOUNT CARMEL HIGHWAY

When driving the Zion-Mount Carmel Highway, remember that large vehicles, RVs and some truck campers will require traffic control to enter the tunnels, and must enter during ranger hours of 8am-8pm.

READ THE
FULL STORY



BLOG POST